

**Mercado provisional**

D U Q U E D E R I V A S

M O L I N A

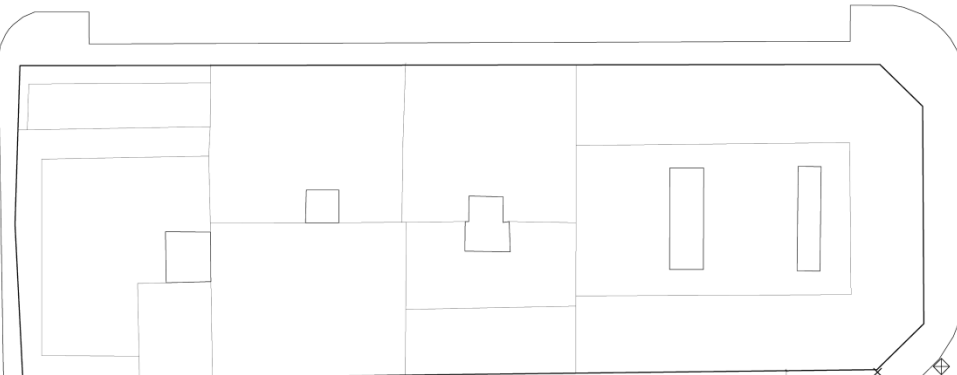
G R A V I N A

T I R S O D E

B A R T O L O M É

S A N D E L M O L I N I L L O

S A L A M A N C A



S A L O M Ó N



MERCADO PROVISIONAL

MERCADO MUNICIPAL DE SALAMANCA

TM.01  
TM.02  
TM.03  
TM.04  
TM.05  
TM.06  
TM.07  
TM.08  
TM.09

TM.10 SA.01 SA.02 SA.03 SA.04









CONTENEDORES

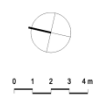
PAPELERA

CABINA

CONTENEDORES

**SIMBOLOGÍA**

-  SEMAFORO
-  FAROLA
-  SEÑALIZACIÓN TRÁFICO
-  IMBORRAL ALCANTARILLADO
-  ARQUETA DE SANEAMIENTO
-  ARQUETA DE TELEFONÍA
-  ARQUETA DE ABASTECIMIENTO
-  ARQUETA DE ALUMBRADO



Emplazamiento en c/ Salomón

